



# KOX11 Polyclonal Antibody

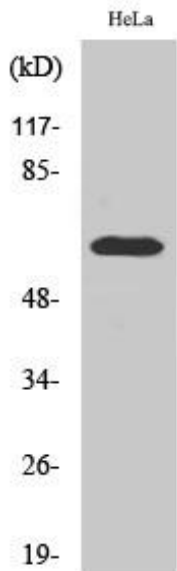
<b>Catalog No</b>	YP-Ab-01842
<b>Isotype</b>	IgG
<b>Reactivity</b>	Human;Mouse;Rat
<b>Applications</b>	WB;ELISA;IHC
<b>Gene Name</b>	ZNF18
<b>Protein Name</b>	Zinc finger protein 18
<b>Immunogen</b>	The antiserum was produced against synthesized peptide derived from human ZNF18. AA range:261-310
<b>Specificity</b>	KOX11 Polyclonal Antibody detects endogenous levels of KOX11 protein.
<b>Formulation</b>	Liquid in PBS containing 50% glycerol, 0.5% BSA and 0.02% sodium azide.
<b>Source</b>	Polyclonal, Rabbit,IgG
<b>Purification</b>	The antibody was affinity-purified from rabbit antiserum by affinity-chromatography using epitope-specific immunogen.
<b>Dilution</b>	WB 1:500-2000;IHC-p 1:50-300; ELISA 2000-20000
<b>Concentration</b>	1 mg/ml
<b>Purity</b>	≥90%
<b>Storage Stability</b>	-20°C/1 year
<b>Synonyms</b>	ZNF18; HDSG1; KOX11; ZKSCAN6; ZNF535; Zinc finger protein 18; Heart development-specific gene 1 protein; Zinc finger protein 535; Zinc finger protein KOX11; Zinc finger protein with KRAB and SCAN domains 6
<b>Observed Band</b>	62kD
<b>Cell Pathway</b>	Nucleus .
<b>Tissue Specificity</b>	Brain,Cerebellum,Lymphoid,Prostate,
<b>Function</b>	function:May be involved in transcriptional regulation.,similarity:Belongs to the krueppel C2H2-type zinc-finger protein family.,similarity:Contains 1 KRAB domain.,similarity:Contains 1 SCAN box domain.,similarity:Contains 5 C2H2-type zinc fingers.,
<b>Background</b>	function:May be involved in transcriptional regulation.,similarity:Belongs to the krueppel C2H2-type zinc-finger protein family.,similarity:Contains 1 KRAB domain.,similarity:Contains 1 SCAN box domain.,similarity:Contains 5 C2H2-type zinc fingers.,
<b>matters needing attention</b>	Avoid repeated freezing and thawing!



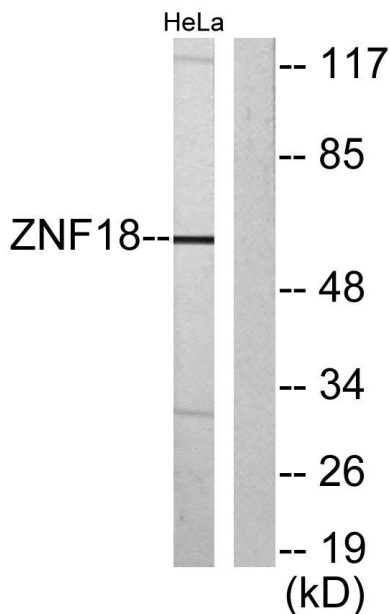
**Usage suggestions**

This product can be used in immunological reaction related experiments. For more information, please consult technical personnel.

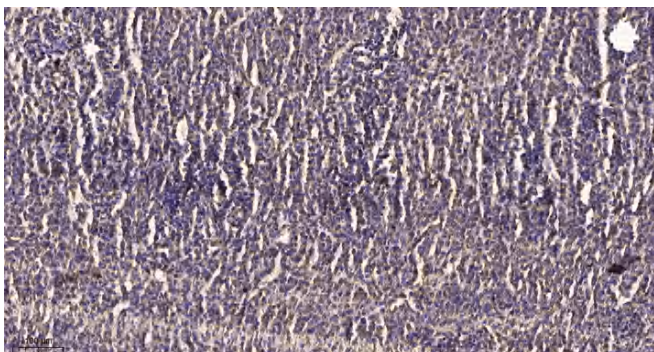
**Products Images**



Western Blot analysis of various cells using KOX11 Polyclonal Antibody



Western blot analysis of lysates from HeLa cells, using ZNF18 Antibody. The lane on the right is blocked with the synthesized peptide.



Immunohistochemical analysis of paraffin-embedded human meningioma. 1, Antibody was diluted at 1:200(4 ° overnight). 2, Tris-EDTA,pH9.0 was used for antigen retrieval. 3,Secondary antibody was diluted at 1:200(room temperature, 45min).